

Assembly Instructions

List of components:

- 1x Arduino Mega2560PRO (embed)
- 1x Module SDCard
- 1x Screen OLED
- 1x Slot SNES
- 2x Push buttons
- 2x Resistors 10k ohms

Download PCB manufacturing files:

<https://github.com/sanni/cartreader/tree/master/pcb/pocketsnes>

Sketch (program) for operation:

<https://github.com/sanni/cartreader/wiki/How-to-flash-the-Arduino>

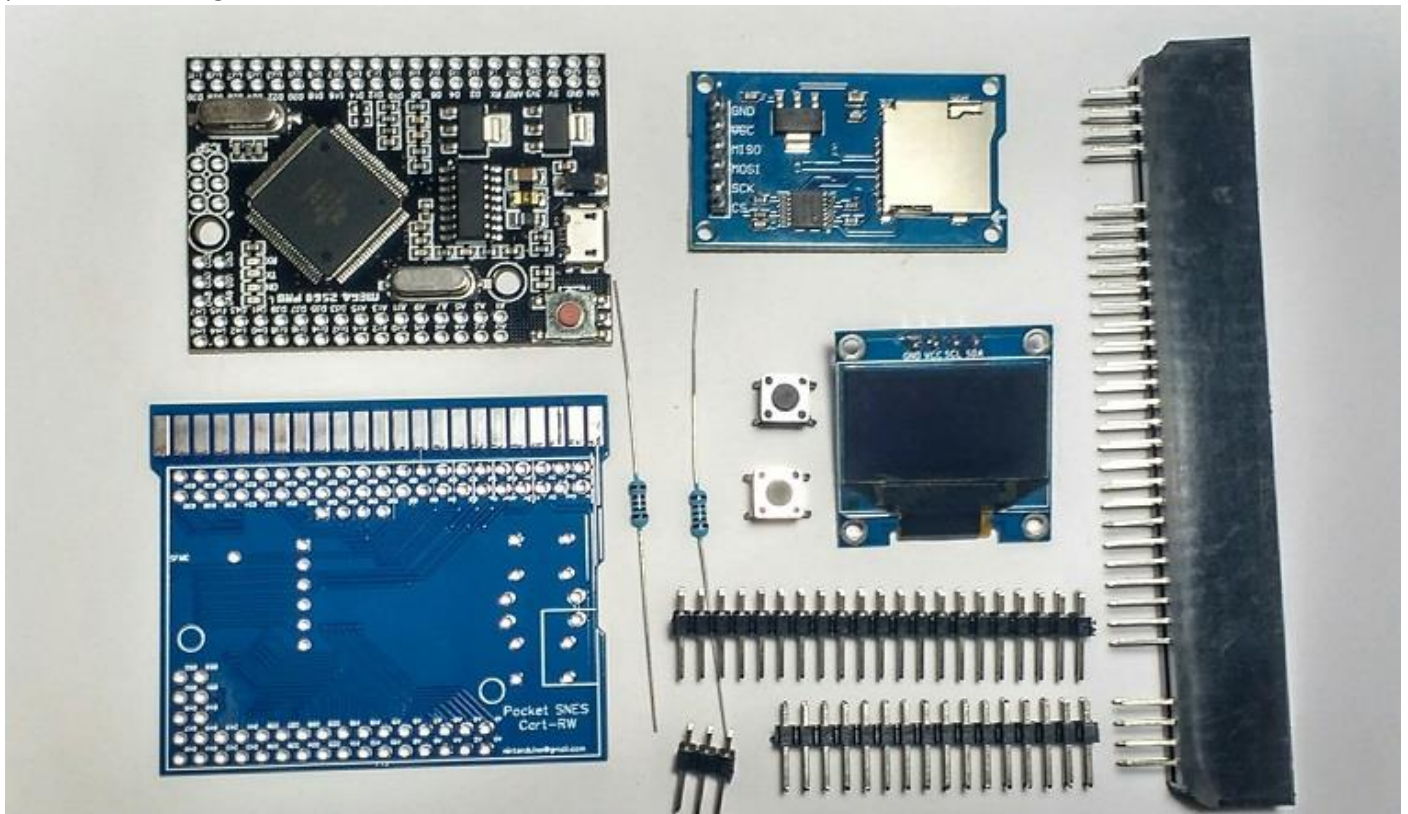
Original project page:

<https://github.com/sanni/cartreader>

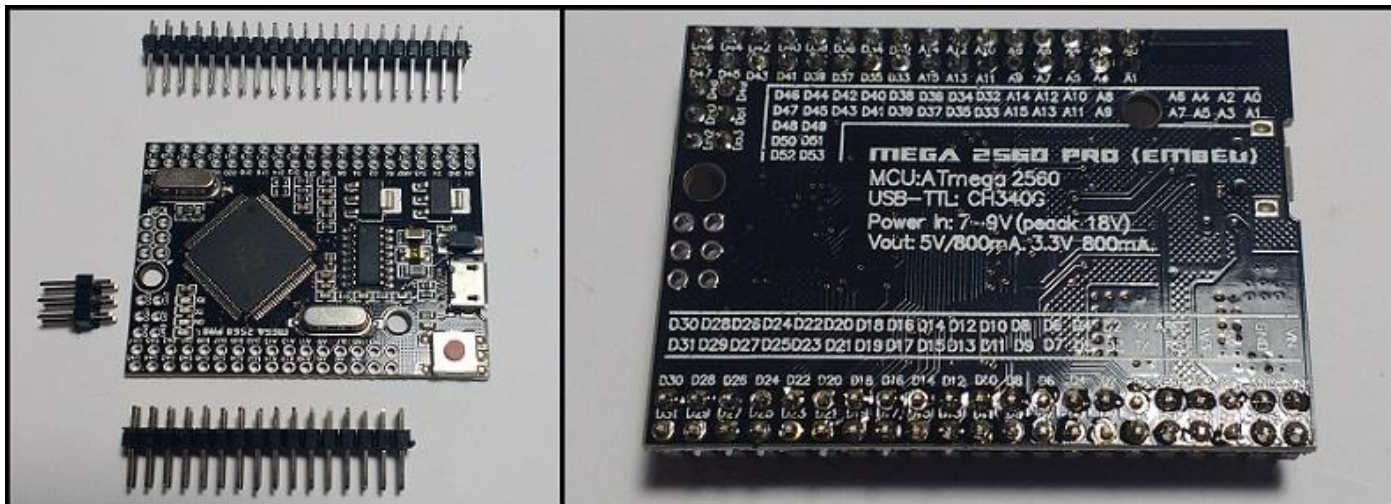
Note: Link to a good option for PCB manufacturing:

<https://docs.easyeda.com/en/PCB/Order-PCB>

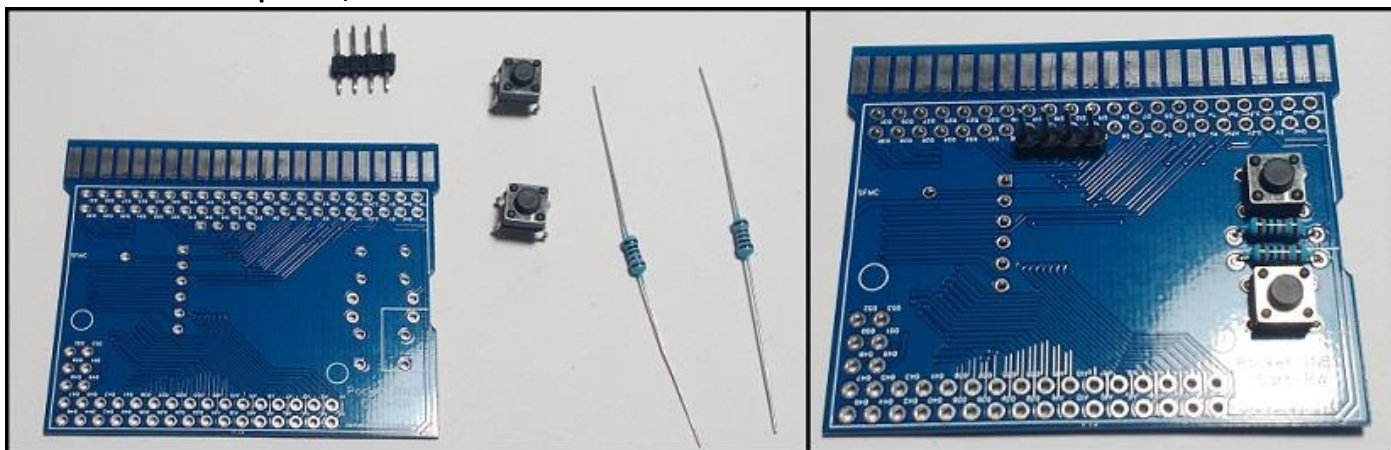
ATTENTION: For better compatibility and fitting into the Pocket SNES Cart-RW assembly, try to use components / parts like the image below:



1-Weld Pin Bar on Arduino Mega2560PRO:

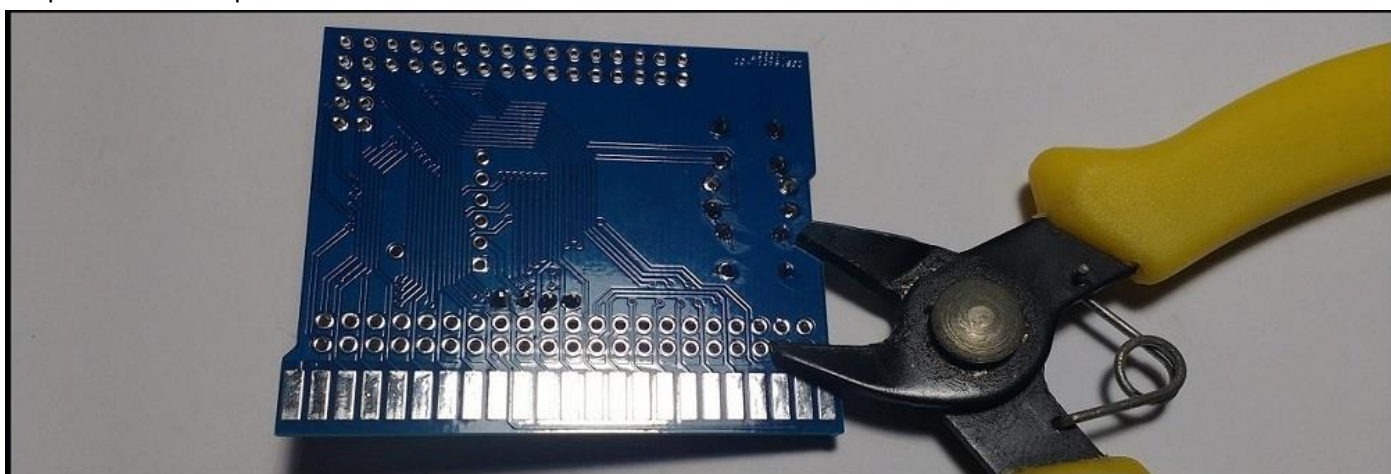


2-Weld OLED screen pin bar, buttons and resistors:



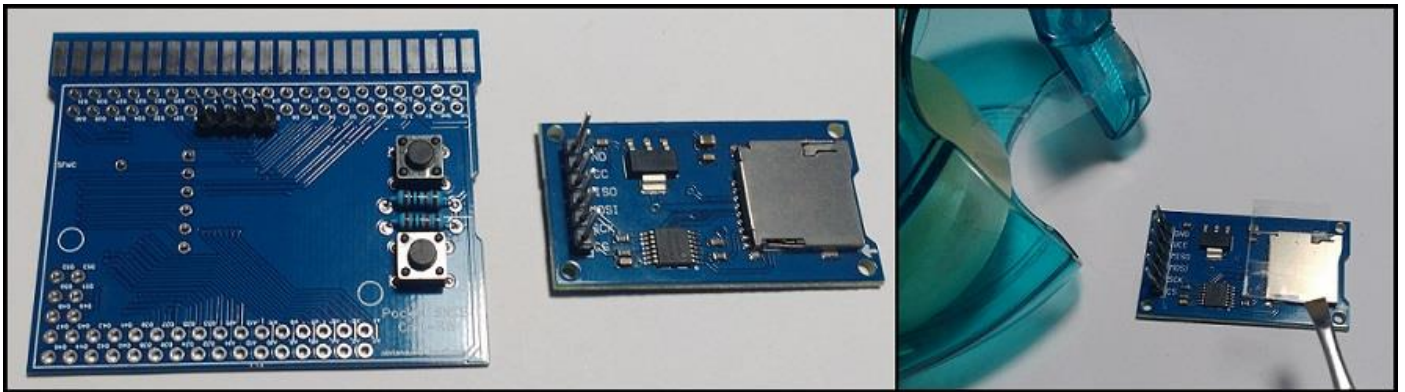
3-Cut leveled PCB the remains of buttons and resistors:

* Tip: Use zero-cut pliers.

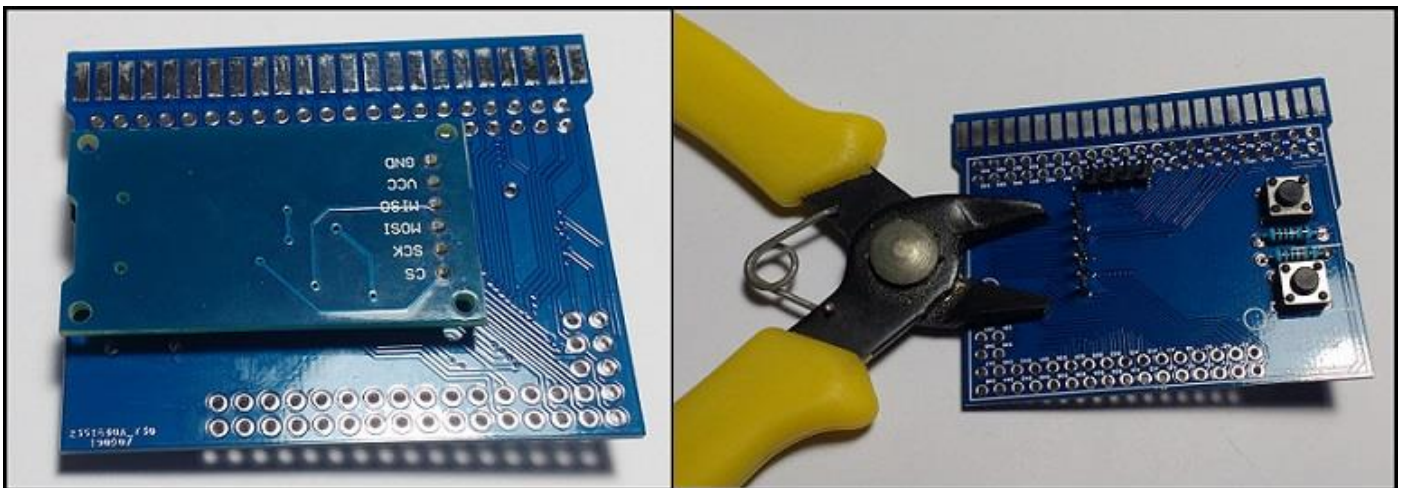


4-Weld the SDCard Module:

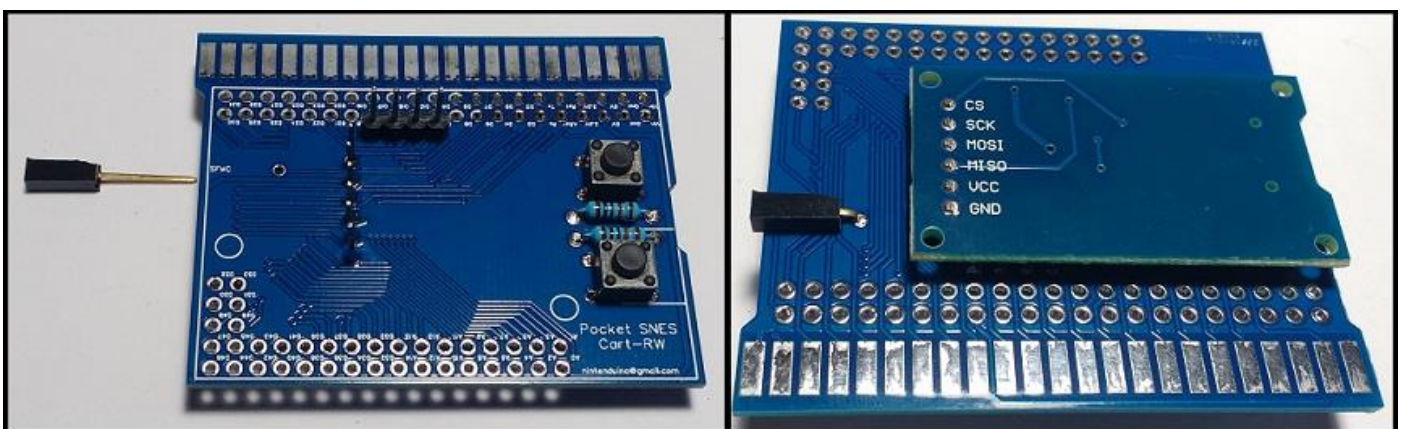
* Tip: Before welding, cover the upper metal with adhesive / electrical tape.



4.1- Cut leveled to PCB the remnants top and bottom Module SDCard pin bar:



5-OPTIONAL: Weld 1 female connector for use with SFMC:



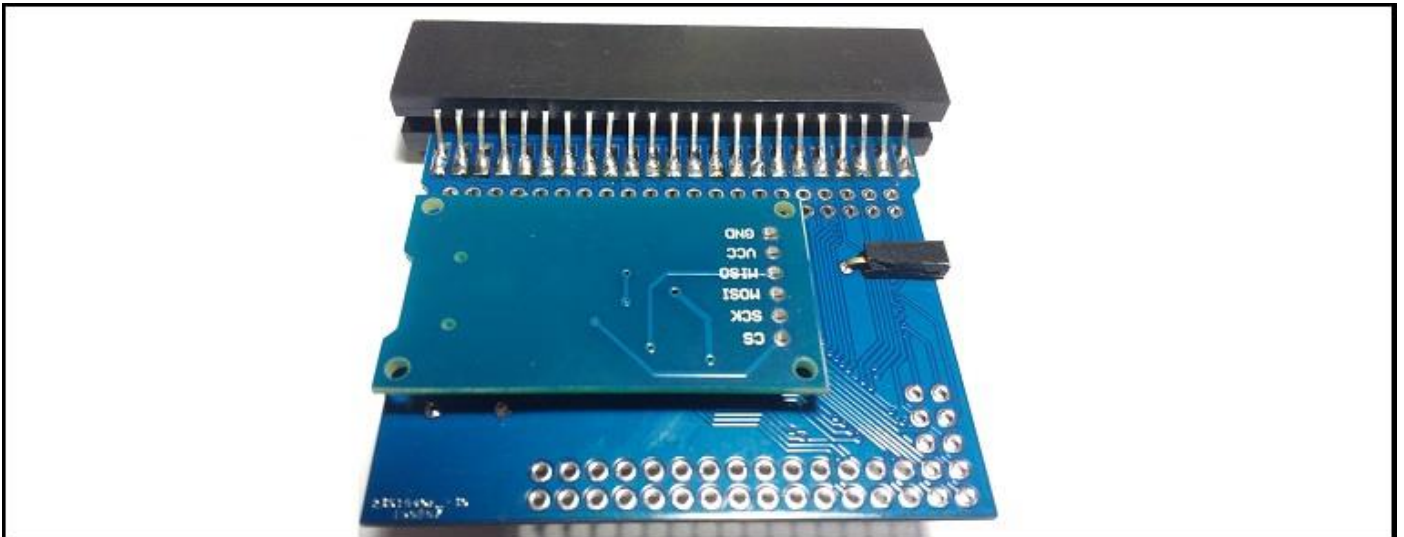
6-Weld SNES Slot on the top of PCB;

Tip: Fit a cartridge into the slot to keep it leveled and help to weld.

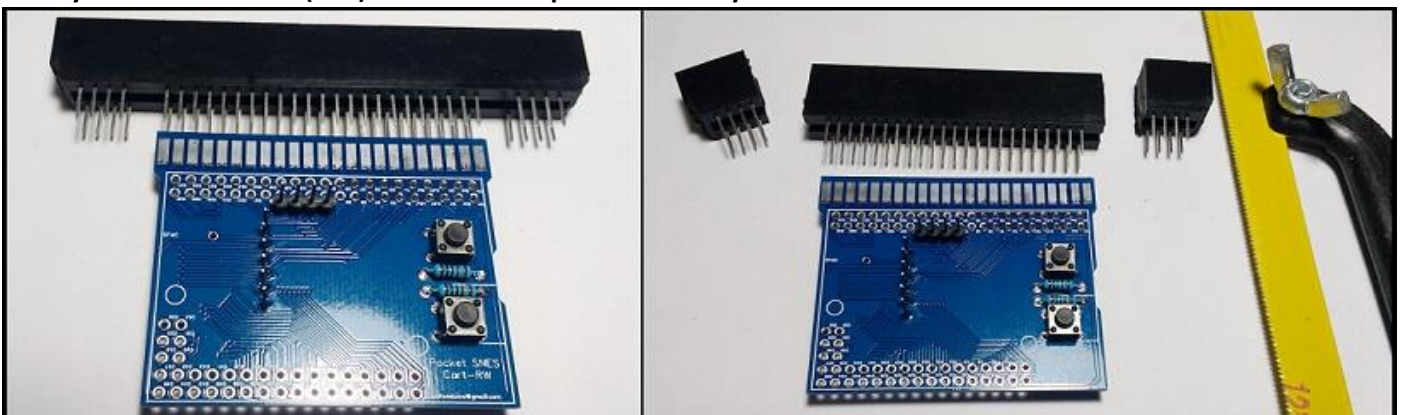


6.1-Weld at the bottom:

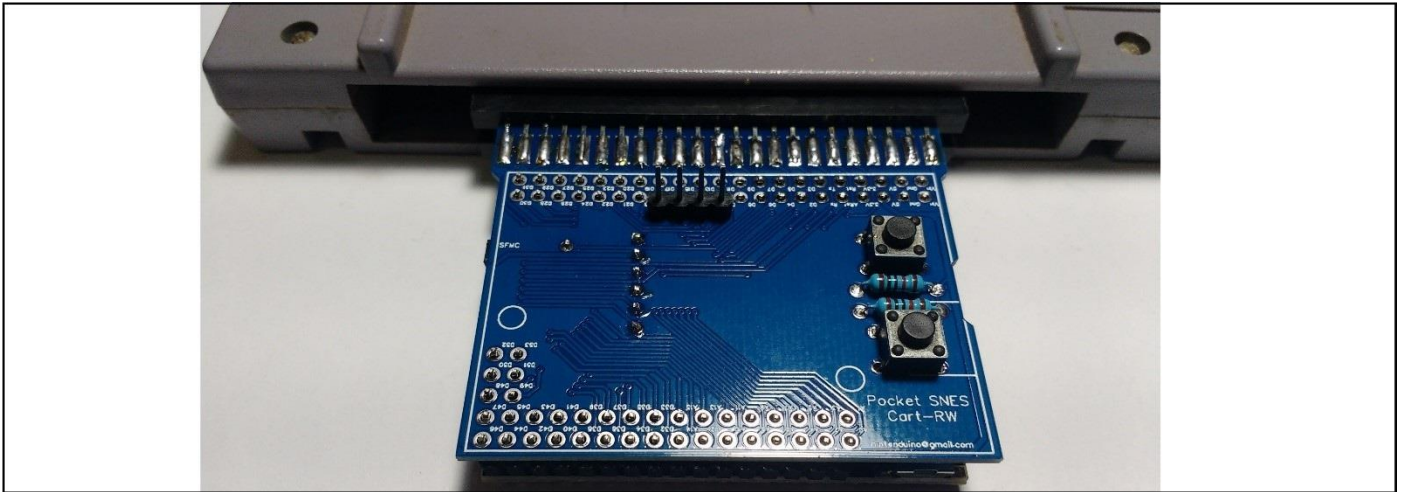
* Tip: Put some tin on the pcb pads and then bend each pin one by one and weld it connected to the pads.



6.2 If your slot is default (62P) cut the side expansions or buy a 46P slot

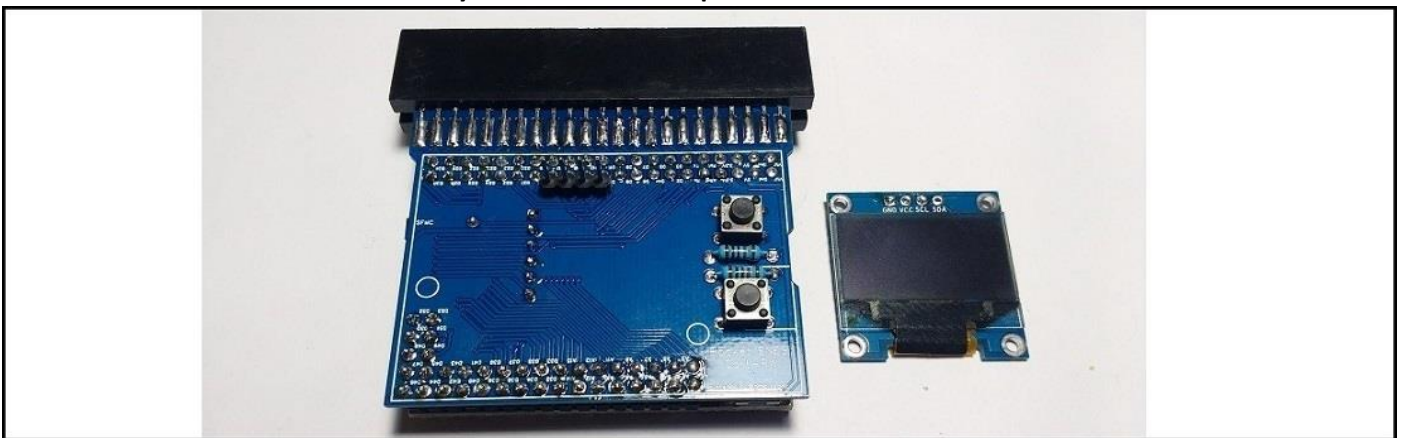


7-Weld PCB on pin bar on Arduino:



8-Weld OLED screen on pin bar:

* **IMPORTANT:** The connections on my OLED screen in sequence are: **GND-VCC-SCL-SDA**



Done :)

